

CE FDA
ISO 13485



5 ZHIYING STREET, SUZHOU NEW DISTRICT,
SUZHOU, JIANGSU, CHINA 215129,P.R.CHINA
PHONE: +86 512 66650502
FAX: +86 512 66909655
E-MAIL: SALES@ZUMAXMEDICAL.COM
HTTP://WWW.ZUMAXMEDICAL.COM

EN_Medical_V01.00.01_20251127 Printed in China
The brochure content may not match the current approval status of local products/services; design and delivery
scope are subject to change with technical advancements, without prior notice.

OMS2350
SURGICAL MICROSCOPE

INTEGRATED FULL HD IMAGING SYSTEM

1080P Full HD Digital Imaging System

Featuring a **high-end SONY CMOS sensor**, supports FULL HD resolution output. Supports recording formats of JPEG and MP4.

One-touch photo/video function. Optional wireless foot pedal is available for convenient real-time photos and video capture, easy document.

Full HD real-time network transmission allows live observation of surgeries through various display devices. Effectively aids clinical work, teaching and re-search and patient communication.





SUPERIOR OPTICAL QUALITY

Premium Imported Optical Glass with Multi-layer Optical Coating

Eliminates chromatic aberration, delivering exceptional optical performance with a large depth of field, high clarity and high resolution.



Wide-Field Eyepieces

With a field of view angle greater than 50° , features: **eyecup height adjustment and diopter adjustment.**



6-Step Manual Magnification

Located on both sides of the microscope body, allows for quick and convenient switching between high, medium, and low magnification.

6-step manual magnification	Example: the focal length of F=250mm and 12.5X eyepiece:					
MF	0.3x	0.5x	0.8x	1.2x	2.0x	3.0x
Total magnification	2.8x	4.2x	6.9x	10.4x	17.0x	25.6x
FOV diameter (mm)	89	59	36	24	15	10

OMS2350

Brightness Adjustment Knob

0° – 180° Inclinal Binocular Tube With PD Adjustment

Rotating Ring

Wide-Field Eyepieces

6-Step Manual Magnification

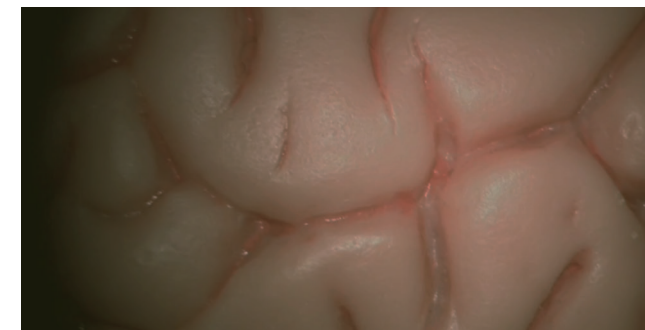
Integrated Full HD Camera

110mm

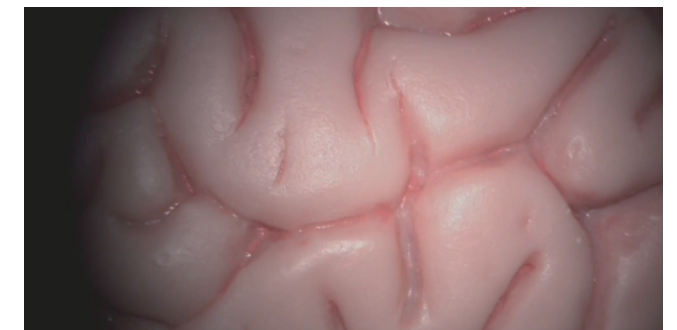
Patented LED Integrated Illumination Module

(Patent No.: ZL 2010 1 0229328.2)

Featuring **high-quality medical-grade LED** light sources, it offers **true-to-life color reproduction** and clear light spots. **Less energy consumption, longer lifespan**, ensuring greater safety and reliability. It's designed to **operate silently**.



LED



ZUMAX PATENTED LED

Adjustable Working distance

A comprehensive range of objective lenses is available to address your surgical requirements.



VarioDist Objective Lens

F=190~300



Objective Lens (fixed focus)

F=200mm, 250mm, 300mm, 350mm, 400mm

COMFORTABLE ERGONOMICS

120° Adjustable Balancing Arm

The 120° adjustable balancing boom allows for precise calibration. This effectively enhances the **smoothness and comfort** of microscope operation.

Connect the beam splitter and stereo observation tube and 180 deg inclinable binocular.



0° – 180° Inclinable Binocular Tube With PD Adjustment

Designed in accordance with **ergonomic** principles, this feature ensures that clinicians can achieve an ergonomic posture. It helps clinicians **avoid the troubles of cervical spondylosis and lumbar spondylosis**.



Precise PD Adjustment

Calibration accuracy is less than 1 mm, allowing users to quickly adjust

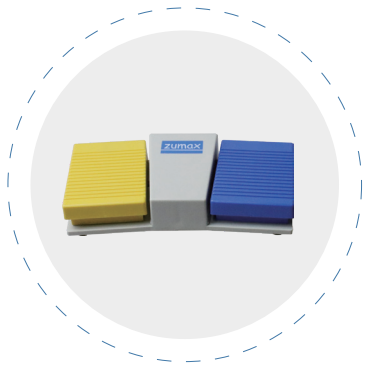


ACCESSORIES



Laser Protection Module

It provides protection against laser wavelengths of 810nm (fiber laser), 1064nm (semiconductor laser or YAG laser), 2780nm (Er, Cr: YSGG laser), 2940nm (Er: YAG laser), and 10.6 μ m (CO2 laser).



Wireless Foot Pedal for Camera

Suitable for use with Canon/Nikon/SONY DSLR cameras. It allows doctors to capture satisfactory clinical images at any time during treatment.



Depth of Field Enhancer (Variable Aperture)

Based on optical imaging principles, the variable aperture can triple the depth of field in captured images, with particularly noticeable effects at high magnifications.



Easy360 / Easy360 Plus Smartphone Adapter

Allows smartphones to directly record microscopic images and videos, enabling clinicians to share and discuss cases on the internet in real-time. **World's first microscope smartphone imaging adapter.**



30° optical extender & beam splitter



Rotating ring



45° optical extender



Flash adapter



Rota 360 digital camera adapter



Digital camera adapter (Canon/Sony/Nikon)



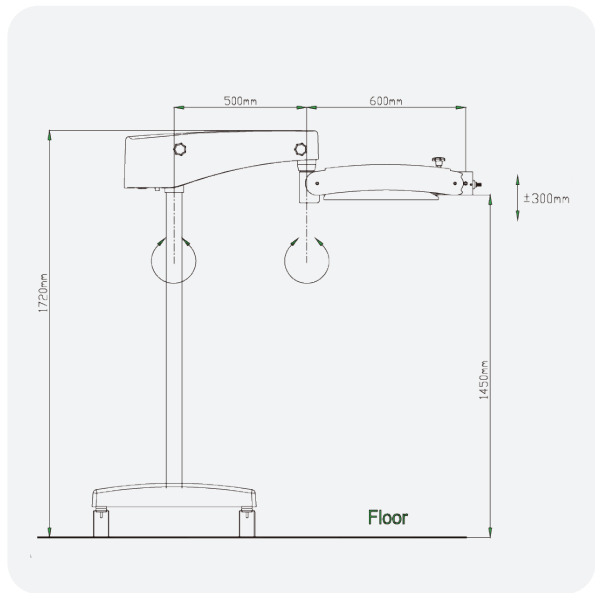
iPad adapter



Digital Camcorder adapter

CONFIGURATIONS

Basic configuration	
Binocular tube	0~180° inclinable binocular tube, focal length F=170mm, PD adjustment range 54mm~76mm
Eyepiece	12.5X, diopter adjustment range ± 7D
Objective Lense	F=250mm
Fine focus	F=250mm objective lense with fine focus, focusing range 13mm
Object surface illumination (F250)	LED light source >60,000Lx
Field of view diameter (F250)	10mm~89mm
Spot diameter (F250)	> Φ90mm
Filters	yellow filter, green (red-free) filter
Second arm	length 600mm, rotation angle ± 150° , up and down movement ± 300mm
First arm	length 500mm, rotation angle 360°
120° adjustable balancing arm	can adjust torque and damping according to lens load to keep the microscope balanced, Makes operation smooth and comfortable
Illumination system	Dual-channel LED illumination system, continuously adjustable brightness, life span not less than 60,000 hours
Automatic switch	The arm is equipped with an automatic power switch device
Net weight	Floor-standing type (H-shaped base) 80kg



Upgraded configuration (optional)	
Binocular tube	0~180° inclinable binocular tube with PD adjustment
Eyepiece	10X, 16X, 20X
Objective Lense (fixed focus)	F=200mm objective Lense with fine focus, adjustment range 13mm, F=300mm, F=350mm, F=400mm (optional)
VarioDist objective lens	F=190~300mm
Ergonomic optical extender	30° angle, and can be integrated with stereo beam splitter
Stereo beam splitter	2:8 or 5:5
Digital camera Adapter	Compatible with Canon, Nikon, and Sony DSLR cameras
HD Digital Camcorder adapter	Compatible with Canon, Sony, and Samsung HD Camcorder
C/CS-Type CCD Adapter	1/3" external beamsplitter
Integrated Camera	HDMI output, Full HD 1920 × 1080
Wireless Foot Pedal for DSLR Cameras	Compatible with Canon DSLR series/Nikon/Sony mirrorless cameras
Imaging System	Digital HD imaging system (for OS or Windows operating systems)
Flash adapter	Ring flash and dual-head flash adapter
Laser Protection Module	protection against laser wavelengths of 810nm (fiber laser), 1064nm (semiconductor laser or YAG laser), 2780nm (Er, Cr: YSGG laser), 2940nm (Er: YAG laser), and 10.6 μ m (CO2 laser).
Depth of Field Enhancer (Variable Aperture)	Increases depth of field
Extended Second Arm	Length 950mm, rotation angle ± 150° , vertical movement ± 400mm
HD Imaging Transmission	Wireless HD video transmission, Ethernet HD imaging output for clinic solutions