

Instruction Manual

Sensor Positioning System

This manual contains instructions for using and selecting the MyRay sensor holders only. These instructions are principally meant for certified professionals in dental and oral care procedures.

Cleaning and Sterilization Procedure

Prior to use, always cover the sensor with a new hygienic sheath before inserting the sensor into the holder. After use with a patient, the holder must be cleaned and sterilized.

1. Discard the hygienic sheath.
2. Remove the Positioning Ring.
3. Remove visible debris from the holder, scrubbing with hot water and soap or detergent.
4. Rinse the holder with warm tap water.
5. Autoclave and cycle per autoclave manufacturer's instructions.

DO NOT exceed 134°C (273°F), steam autoclave only.
 DO NOT use chemical autoclave.
 DO NOT dry-heat sterilize.
 DO NOT rest plastic pieces against metallic surfaces of the autoclave.
 DO NOT use phenol-based glutaraldehyde.

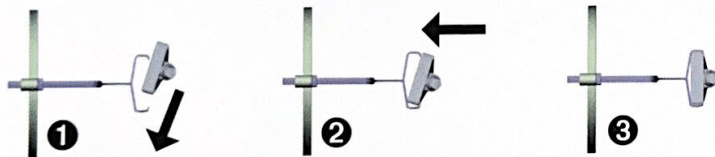
Note:

Plastic parts have a limited life and will show some discoloration when sterilized repeatedly. After a number of autoclave cycles, the holders will wear out.

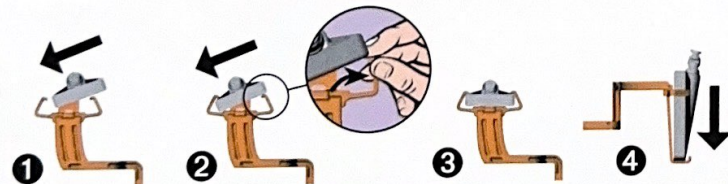
Dispose of them according to local regulations.

Refill packs are available to replace exhausted holders.

ASSEMBLING HORIZONTAL HOLDERS (BITEWING AND POSTERIOR)



ASSEMBLING VERTICAL HOLDERS (PERIAPICAL AND ENDO)



GENERAL HYGIENE NOTES

Responsible product; must be sterilized in autoclave or thermodisinfectant before using it with each patient!

Prior to use, always cover the sensor with a disposable hygienic sheath before inserting the sensor into the holder.

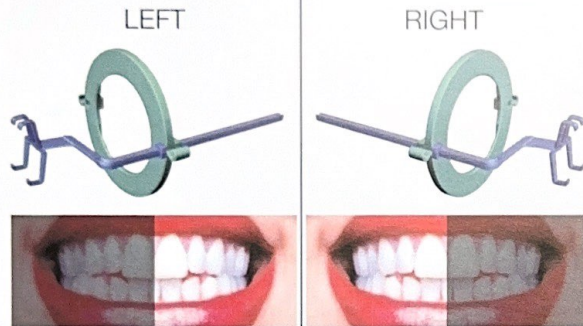


POSITIONING RING

Rotate sensor holder to change position and use the other fixation point of positioning ring.

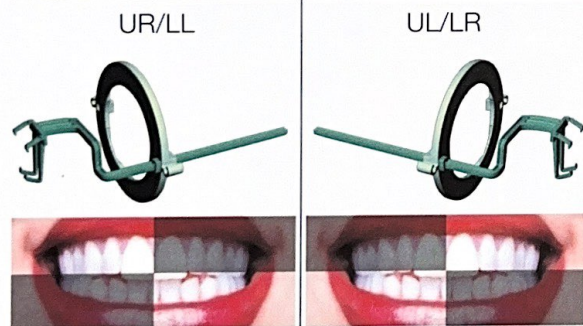
Positioning Rings:
 Prod. nr. 97901112

BITEWING



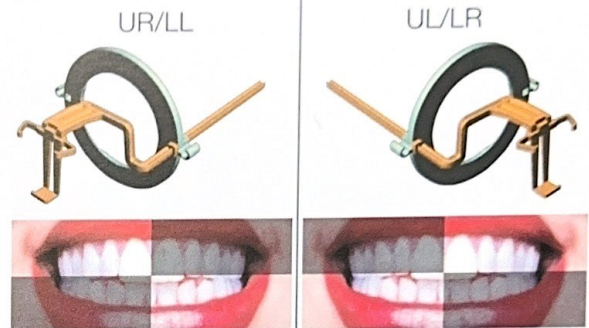
sensor size 1: Prod. nr. 97901104 - sensor size 2: Prod. nr. 97901105

POSTERIOR



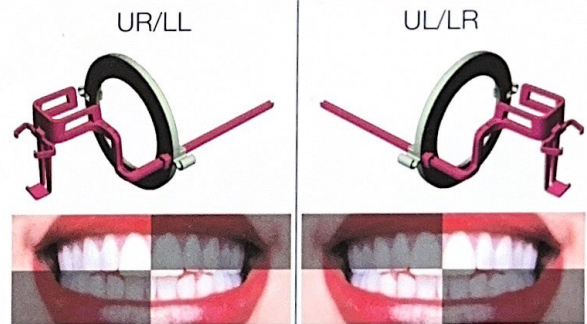
sensor size 1: Prod. nr. 97901106 - sensor size 2: Prod. nr. 97901107

PERIAPICAL



sensor size 1: Prod. nr. 97901108 - sensor size 2: Prod. nr. 97901109

ENDO



sensor size 1: Prod. nr. 97901110 - sensor size 2: Prod. nr. 97901111

97055280 - 05.2021 Rev00



DuPhaMed BV
J.P. Thijssseweg 12
2408 ER Alphen a/d Rijn
The Netherlands

Distribuito da / Distributed by:
BU Medical Equipment
CEFLA s.c.

Via Selice Provinciale 23/a40026 - Bo (Italy)
tel +39 0542 653111 - fax + 39 0542 653344
www.cefla.com

Patent pending. © 2005 DuPhaMed B.V.
All rights reserved. Other Brands and products
are Trademarks of their respective holders.
Caution: U.S. Federal law restricts this device
to sale by or on the order of a dentist.